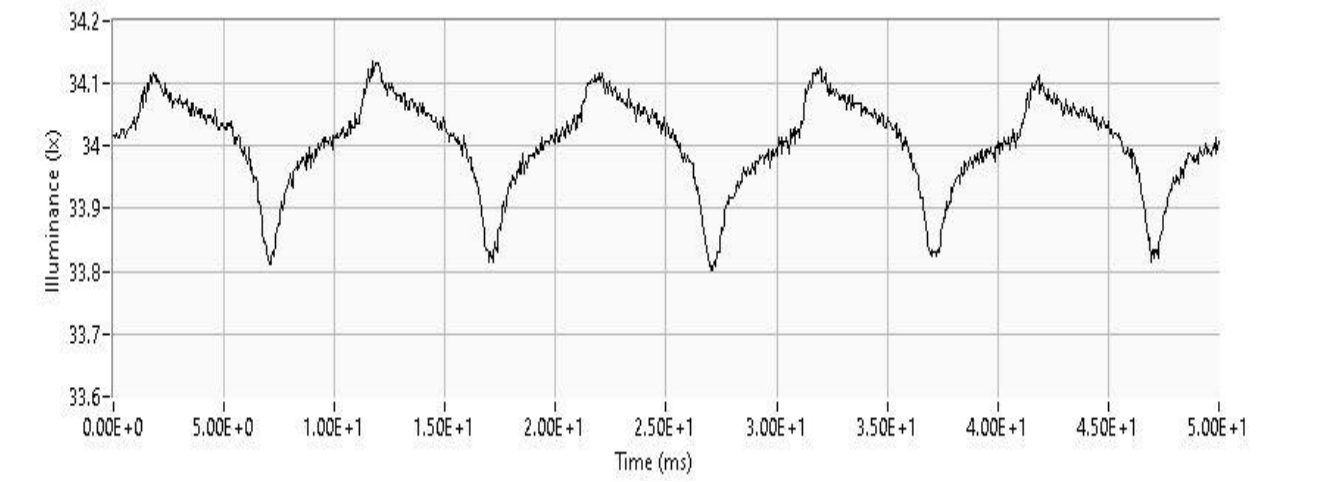


# Flicker Test Report

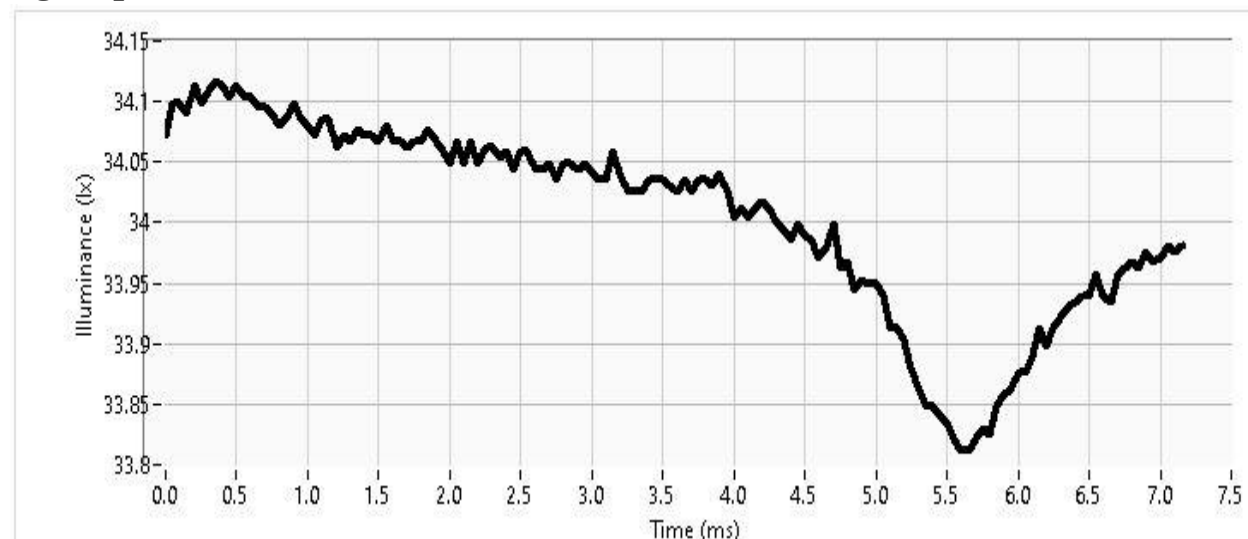
FLICKER CLASSIFICATION (IEEE 1789-2015): No observable effect level NOEL  
SVM (IEC TR 63158): PASS (Test value: 0.010 +- 0.000, Acceptance limit < 0.9)  
Pst LM (IEC TR 61547-1): PASS (Test value: 0.176 +- 0.007, Acceptance Limit < 1.0)  
*Tolerances are evaluated by 2 x standard deviations (k=2, 95% confidence level).*



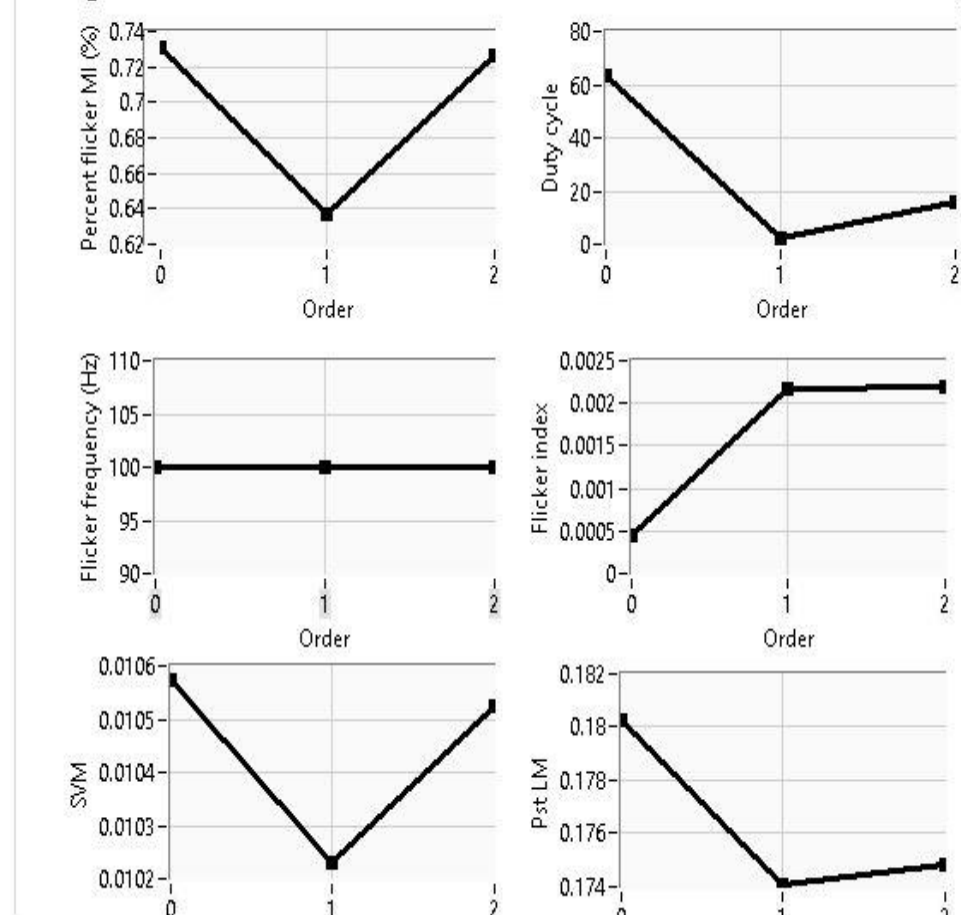
**Table. Flicker analysis summary. The values have been calculated as an average of consecutive repetition measurements.**

	Value	St.dev.
Average signal	34.02	0.07
Mean signal	33.99	0.04
Max signal	34.23	0.03
Min signal	33.75	0.06
Percent flicker (%)	0.70	0.05
Flicker index	0.0016	0.0010
Flicker frequency (Hz)	100.0	0.0
Pulse width (ms)	2.70	3.2
SVM	0.0104	0.0002
Pst LM	0.1764	0.0034

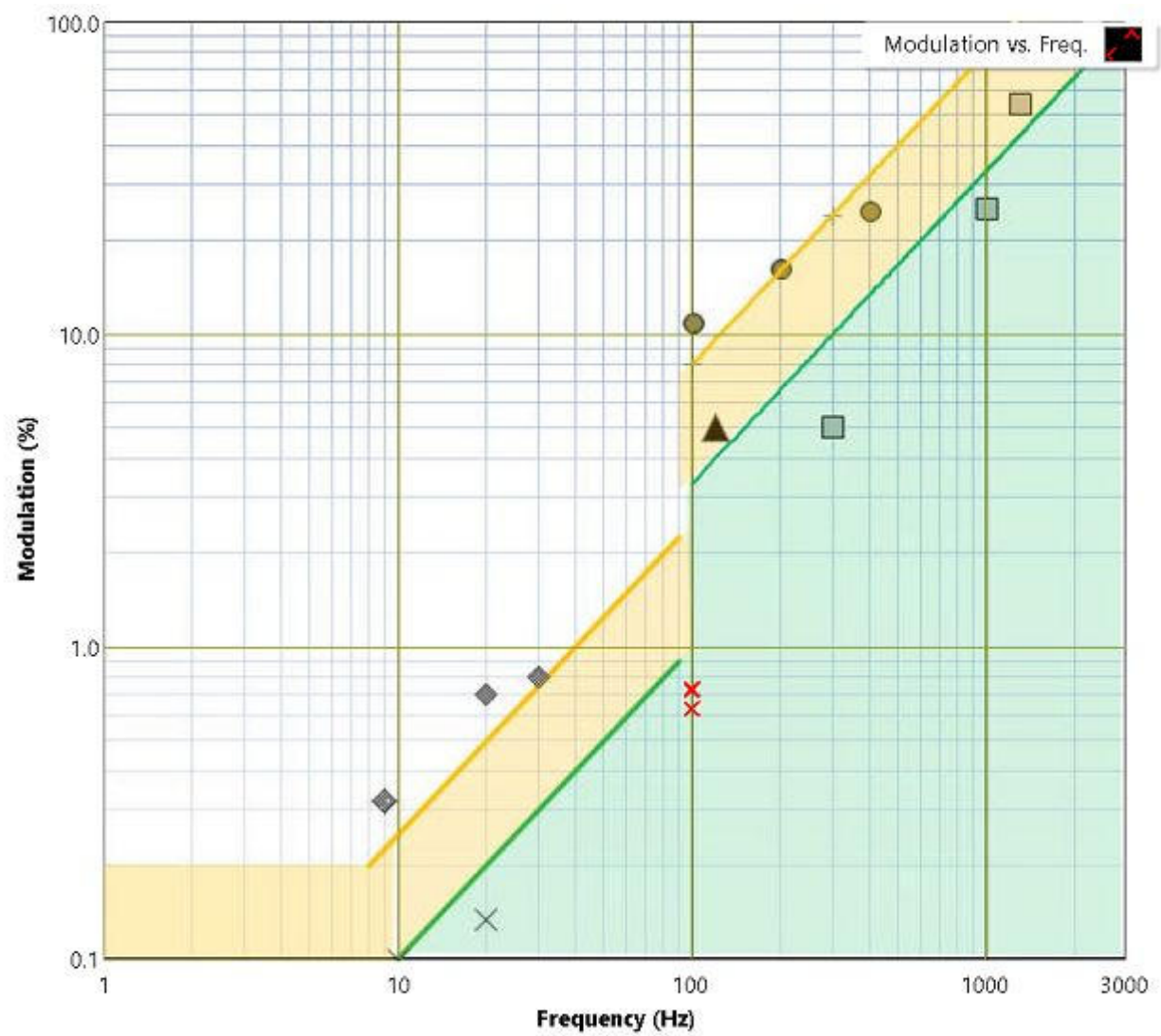
**Figure. Illuminance as a function of time in one period. The graph is calculated for the latest signal period.**



**Figures below show the data as a function of consecutive measurement repeats.**



**Figure. Modulation index (%) vs. Flicker Frequency according to IEEE 1789.**



**Figure. Pst\_LM long signal shape.**

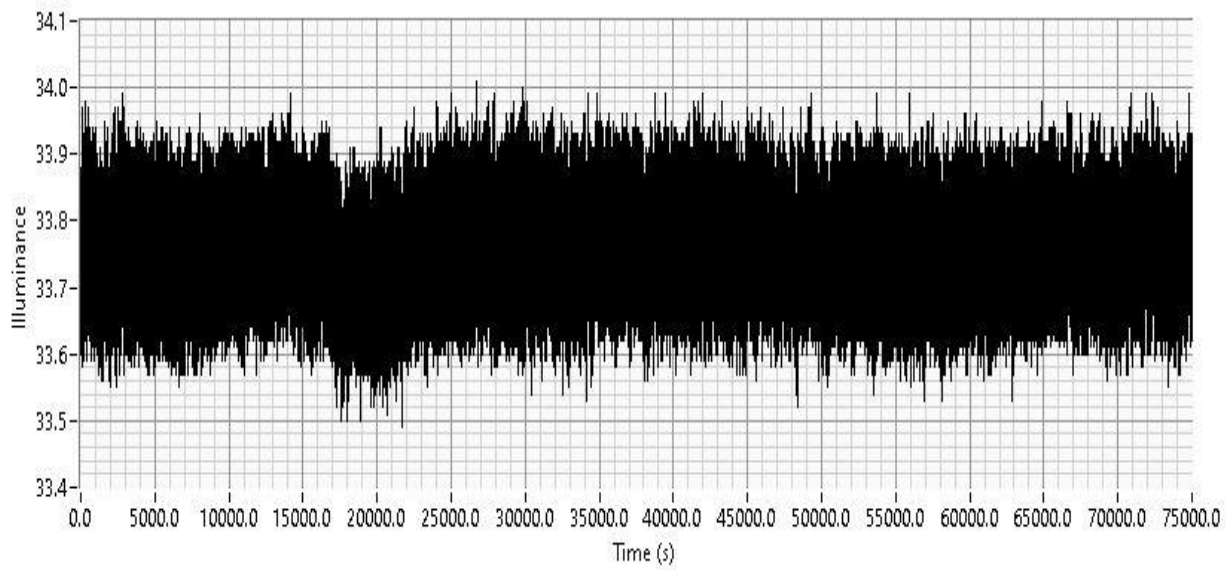


Figure. Fast-Fourier transform for frequency analysis (SVM).

